



---

WALK through

COMPANY  
I N F O R M A T I O N



2026

---

[www.madesol.com](http://www.madesol.com)



GENERAL INFORMATION

**COMPANY NAME**

MADESOL

**CEO**

Javier D. Vargas Seijas

**TYPE**

Contract and hospitality

**CONTACT INFORMATION  
(PERSON RESPONDING)**

Paloma Vargas  
Commercial Manager  
+1 809-736-0767  
+1 809 862 9409  
paloma.vargas@invisard.com

**ADDRESS OF MAIN OFFICE**

Calle Renso Tomas Rosario, Santiago de los Caballeros,  
Dominican Republic  
51000

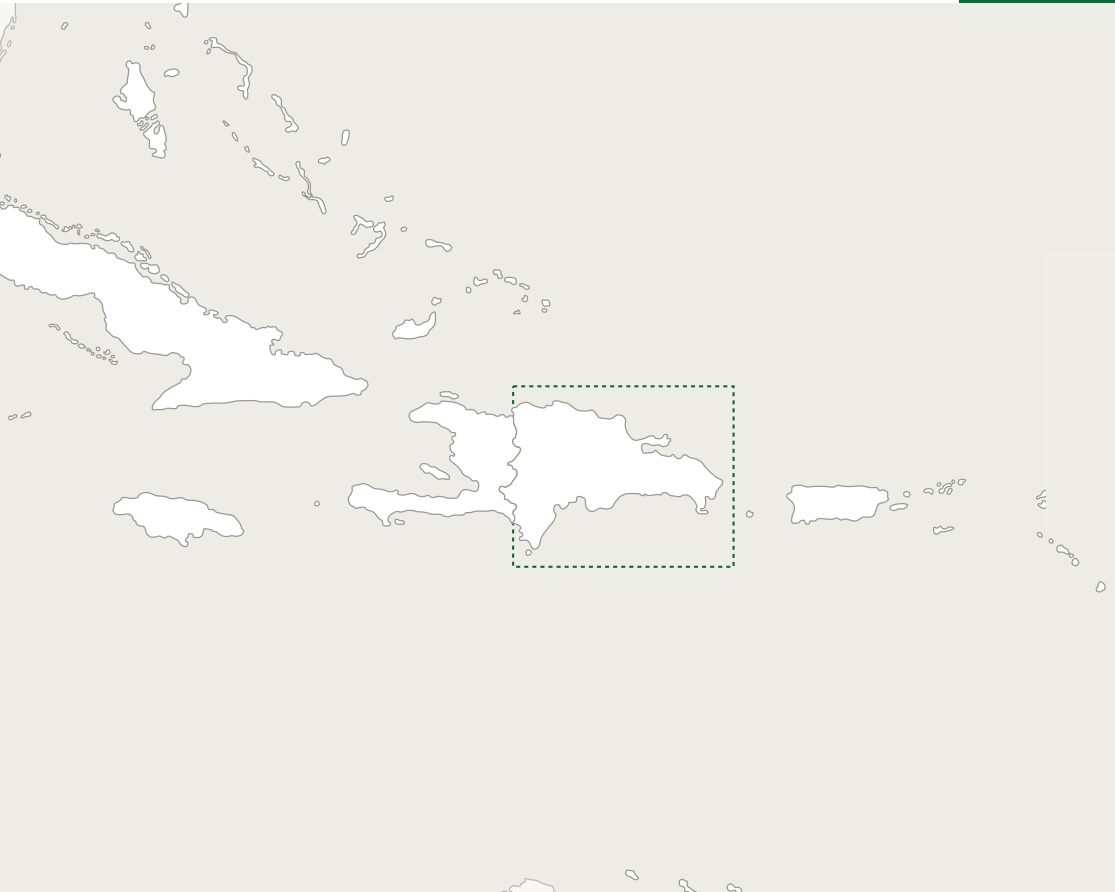
**NUMBER OF YEARS IN BUSINESS**

Since 1995 (31 years)

**NUMBER OF CONTINUOUS YEARS DEVOTED TO  
HOSPITALITY WORK AS SPECIALTY**

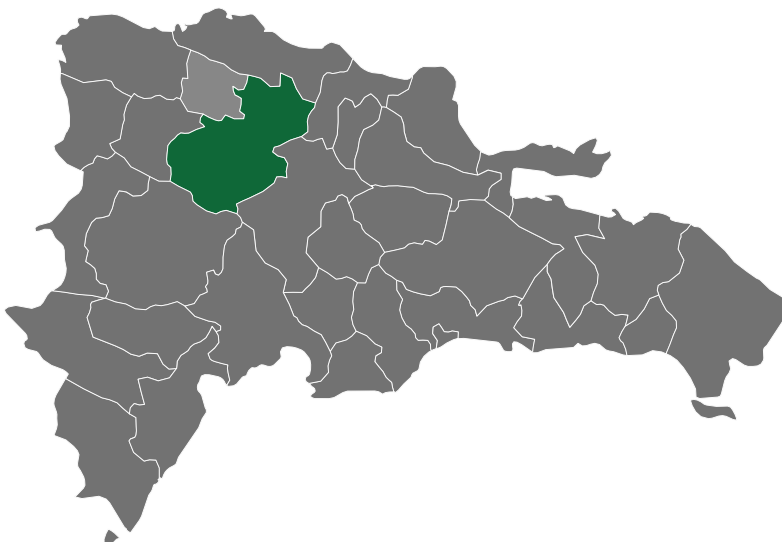
Since 2006 (20 years)

## CONNECTIVITY TO THE INTERNACIONAL MARKET



## LOCATION

Our factory is located in the city of Santiago de los Caballeros, Dominican Republic.



Santiago is the industrial and manufacturing capital of the Dominican Republic, home to a strong production ecosystem and skilled workforce.

Free trade agreement with the US (CAFTA-DR)

Strategically located in Santiago de los Caballeros, Dominican Republic, we operate from a nearshore manufacturing hub with fast access to the Americas, dual-port connectivity, and predictable export logistics for hospitality projects.

## Factory size

Total of Land: 17,160 sqm (184,708 sqft)  
Plant Construction: 9650 sqm (103871.7 sqft)  
Divided in 4 plants

## Average capacity

1,000 rooms per year

## Employees

93 employees



## State-of-the-Art Manufacturing & Compliance

At INSOL, we operate a fully integrated production facility equipped with more than 68 state-of-the-art machines, enabling us to deliver personalized manufacturing solutions for case goods, indoor and outdoor furniture, doors, chairs, cabinets, closets, and general millwork.

Our advanced machinery and streamlined production processes are designed to meet the performance, durability, consistency, and compliance standards required by the hospitality and contract sectors.

beam saw/ panel saw  
edging line  
cnc  
copiers and lathes  
calibrators  
edge band

moulding machines  
presses  
assembly line  
polishing booths  
painting booth  
painting automated line





## Integrated Strength

[www.madesol.com](http://www.madesol.com)

One of our competitive advantages is being part of MADESOL GROUP.

INSOL is the manufacturing arm and fifth branch of MADESOL Group, a vertically integrated organization with 31 years of experience in the wood and construction-related industries.

Our company's philosophy is centered on helping our clients turn their projects into reality across the construction, furniture, and decorative industries. We achieve this by delivering superior-quality products, supported by a careful and strategic selection of suppliers worldwide.

Operating within the Group's integrated ecosystem, INSOL maintains direct relationships with a global network of trusted suppliers across the Americas, Europe, and Asia. This sourcing strength ensures consistent access to premium raw materials—including wood, veneers, panels, hardware, coatings, metals, and complementary products—while maintaining rigorous quality control and efficient manufacturing timelines.

By combining in-house production with global sourcing expertise, INSOL delivers flexibility, reliability, and reduced lead times for hospitality and contract projects.



WALK through





## WALK through

### WOOD SPECIES

INSOL, as part of MADESOL Group, offers a comprehensive and carefully curated range of materials to support construction, carpentry, furniture, and interior projects.

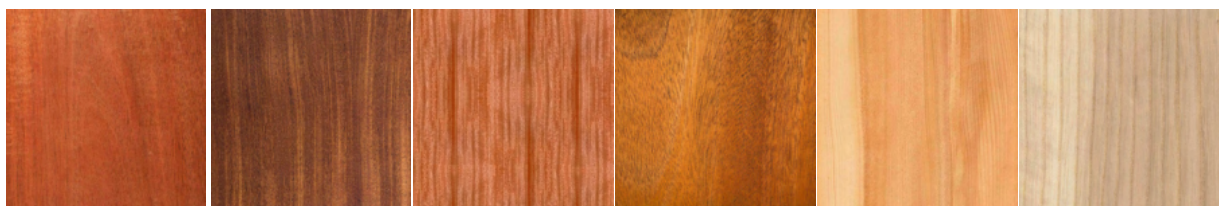
The Group provides access to a wide selection of more than 30 species of solid wood, pine, wood veneers, plywood, MDF, and chipboard, available in multiple sizes, thicknesses, and finishes. Specialized services include custom veneer pressing, with an extensive variety of more than 48 wood species.

Complementing its wood portfolio, MADESOL Group offers wood coatings, painting accessories, varnishes, dyes, impregnates, and architectural finishes, ensuring complete surface solutions from raw material to final application.

The materials offering is further strengthened by a comprehensive hardware and tooling division, supplying fittings and accessories for furniture, doors, carpentry, and woodworking, as well as professional tools for working with wood, stone, and metal.

INSOL and MADESOL Group also provide access to stone, quartz, granite, and sintered stone, alongside finished products such as doors, decks, flooring, and rattan elements, enabling fully integrated solutions for hospitality and contract projects.

As exclusive providers and official representatives of leading international brands including Yato, Caesarstone, ILVA, Milesi, Salice, Techlam, and Coverlam the Group ensures quality, innovation, and reliability across every material category.





VENEER  
PRESSING

*Our main provider of Wood finishes are ILVA AND MILESI which offers quality products such as varnishes, dyes, impregnates and others wood care products*

Madesol carries a wide selection of plywood, MDF, Melamine and Fiber Boards available in different sizes, finishes and thicknesses. As well as a very close relationship with Sonae Arauco- Portugal.

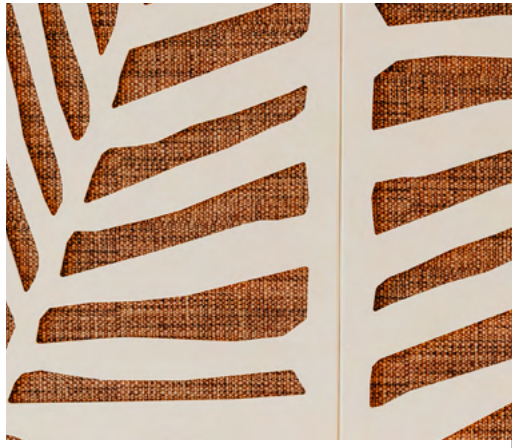


Losán COVERLAM

TECHLAM

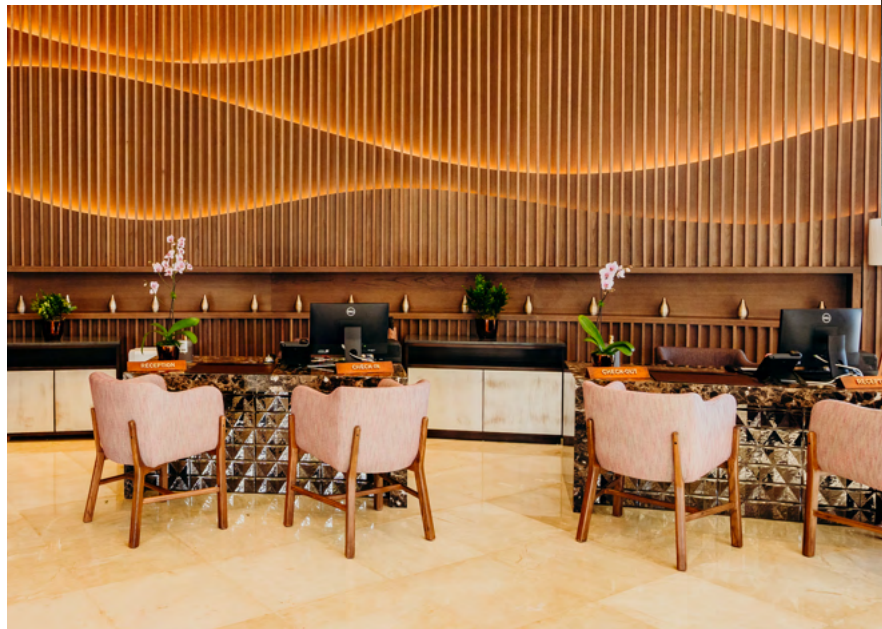
UNLIMITED & AMAZING



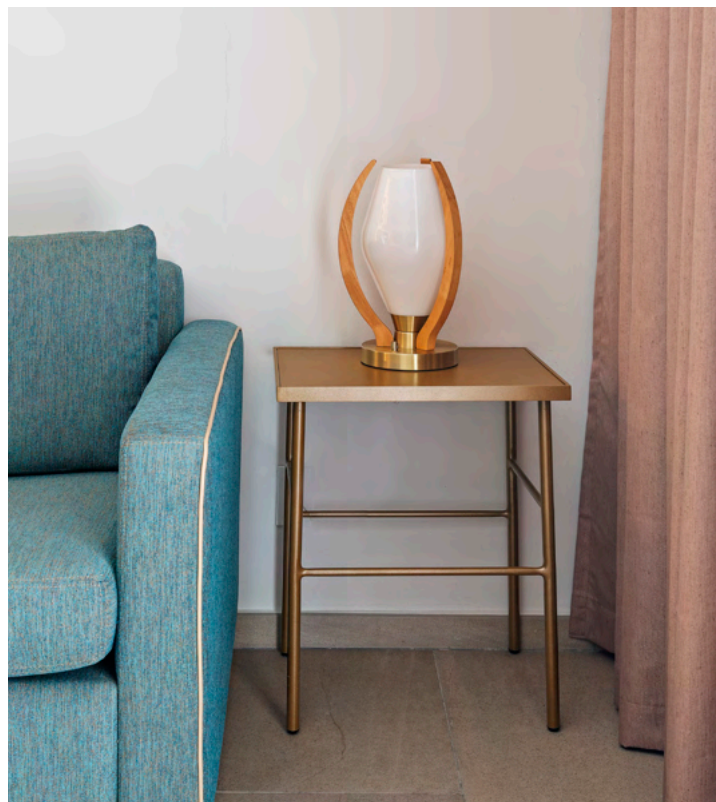
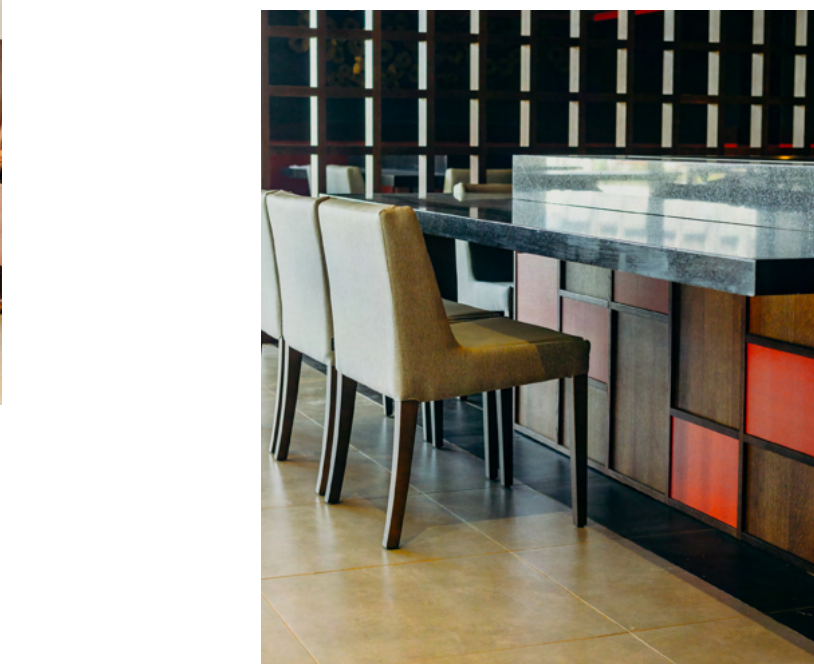


## MATERIALS

Over the years our passion for creation and innovation has led us to maintain and fulfill our commitment to explore new materials and processes, ranging from wood, wood veneer, metals, textiles, aluminum, stainless steel, iron, textilene and stones to the most complex finishes.



WALK through







## PRODUCT TYPE

- Carpentry & Wood Furniture
- Upholstery
- Interior / Exterior Metal Furniture
- Cabinetry and modular

## PRODUCTS

- Doors, Chairs, Closets, Mini Bar, Desk tables, Ottomans, Bed base, Headboard, Nightstand, Vanities, Chaiselounges, Lounge sofa, Side tables, Tables, Other furniture.

METAL FURNITURE



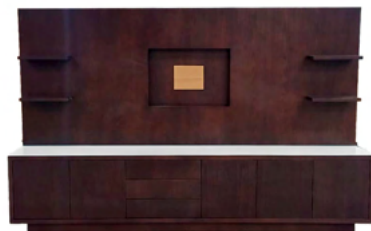
CARPENTRY AND WOOD FURNITURE

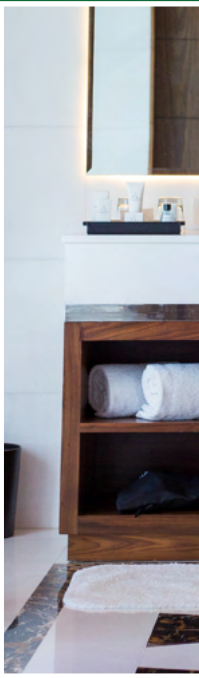


## UPHOLSTERY



## CARPENTRY AND WOOD FURNITURE







## CARPENTRY AND WOOD FURNITURE

CNC machining centers for accuracy and repeatability.

Veneer and panel presses for stable, hospitality-grade surfaces.

Panel saws and edge banding machines for precise modular production.

Molding machines and assembly lines designed for large-scale production.

## FINISHING

Automated painting booths ensuring consistent color and film thickness.

Polishing booths for controlled surface quality.

Automated finishing lines designed for durability and uniform appearance.



## UPHOLSTERY

Precision foam cutting systems  
for consistency and comfort

Industrial and flat sewing machines  
for contract-grade upholstery







# METAL FURNITURE

## I N D O O R S / O U T D O O R S

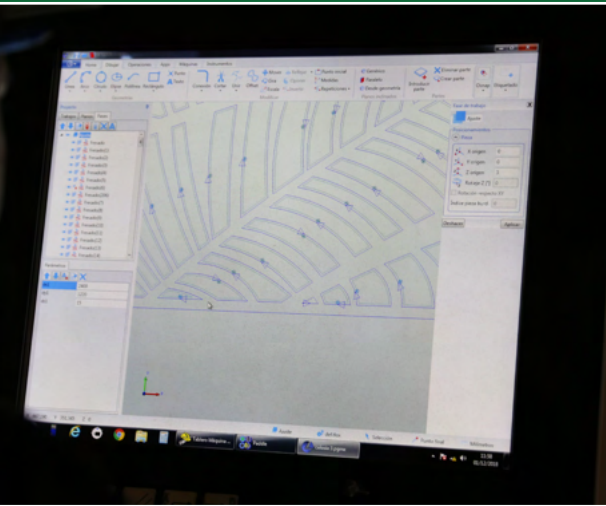
Welding stations, lathes, and milling machines for structural components  
Plasma cutting machine for precision metal fabrication Powder coating  
painting line for corrosion resistance and long-term performance



WALK through



CABINETS AND MODULAR  
FURNITURE  
PANELING



# Hospitality

- JW Marriot - Santo Domingo- Dominican Republic (2015)
- Secrets - Capcana- Dominican Republic (2016-2017)
- Royalton- Antigua (2018)
- Royalton- Punta Cana- Dominican Republic (2018)
- CLUB MED Miches - Dominican Republic (2019)
- Ocean El Faro by H10 Hotels (2018-2019)
- Eden Rock - St.Barths (2018-2019)
- Dreams Macao - Dominican Republic (2019-2020)
- Hard Rock Café - Dominican Republic (2020-2023)
- Hilton Greenville- USA (2020)
- The Ray Hotel - USA (2021)
- The Alford Inn - USA (2022)
- SEACREST - USA (2022)
- Hampton Inn Alpharetta (2022)
- Emory Conference - Atlanta - USA (2022)
- Lucile, Houston - USA (2023)
- Emerald Grand - Outdoor Furniture (2022)
- Swan Hotel - USA (2023)



- AC Santiago – Dominican Republic (2024-2025)
- Santiago City Center- Marriot Curio -Dominican Republic (2024-2025)
- Restaurants ALOFT and Marriot – Dominican Republic
- Islas Secas - Panamá (2024)
- American Trade Hotel - Panama (2024)
- Latitude 18- Restaurants & Marriot Lobby- Dominican Republic (2024-2025)











01

## RCD Hotel

PUNTA CANA

**Project**  
RCD Hotel

**Location**  
Punta Cana,  
Dominican Republic

**Year**  
2020 - 2023

**Product:**  
doors, vanity, desk chair,  
lounge chair, headboard, bed  
base, side tables,





Dreams Macao Beach Punta Cana is a 500 guest room and suites with beautiful views and spacious quarters. Designed by 1804 ROOM Design.





# 02 Dreams Macao

A M R E S O R T S

**Project**  
Dreams Macao  
AM Resorts

**Location**  
Macao,  
Dominican Republic

**Year**  
2019 - 2020

**Owner**  
GSM Investissements  
Dominicana

**Hired By**  
CODELPA



**Designer**  
Room 1804 Design

PROJECT VIDEO



<https://www.youtube.com/watch?v=BCYxA2cGoIQ&t>

**Description:**  
Rooms and Common areas

WALK through



# 3

## Ocean

EL FARO

### Project

Ocean El Faro  
by H10 Hotels

### Location

Uvero Alto,  
Dominican Republic

### Year

2018-2019

### Owner

Inversiones Arzhola  
Ocean Hotels

### Hired By

COLDEPA

### Designer

Lázaro Rosa-Violán  
Contemporain Studio

<http://www.lazarorosaviolan.com/>



PROJECT VIDEO

<https://www.youtube.com/watch?v=q4ZK7qluu-0>

### Description:

Room and Common Areas Furniture





# 04

## Royalton

P U N T A C A N A



**Project**  
Royalton Punta Cana

**Location**  
Arena Gorda,  
Dominican Republic

**Year**  
2018

**Owner**  
Blue Diamond  
Resorts Collections

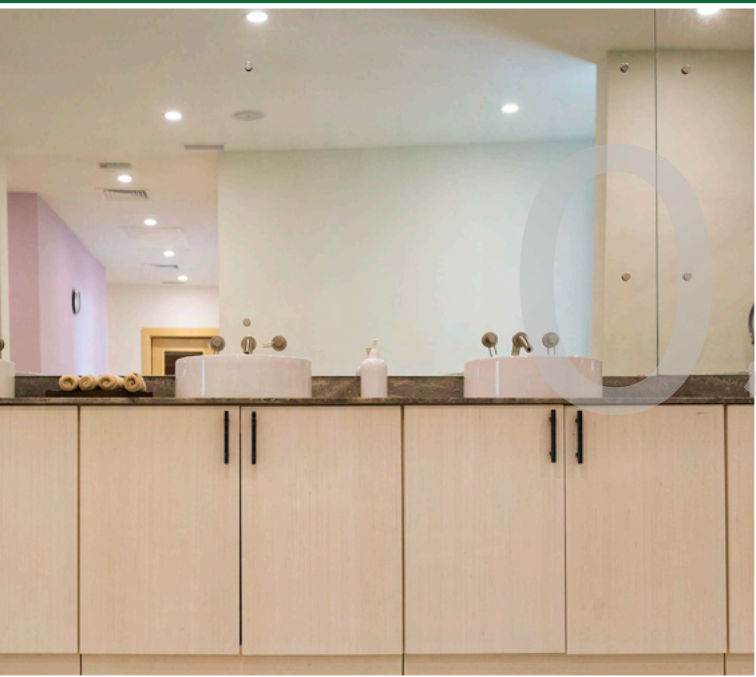
**Hired By**  
COLDEPA

[www.royaltonresorts.com](http://www.royaltonresorts.com)

**Description:**  
Rooms and Common Areas







05

## Secrets Cap Cana

P U N T A C A N A

### Project

Secrets Cap Cana

### Location

Cap Cana, Punta Cana,  
Dominican Republic

### Year

2016-2017

### Owner

AM RESORTS

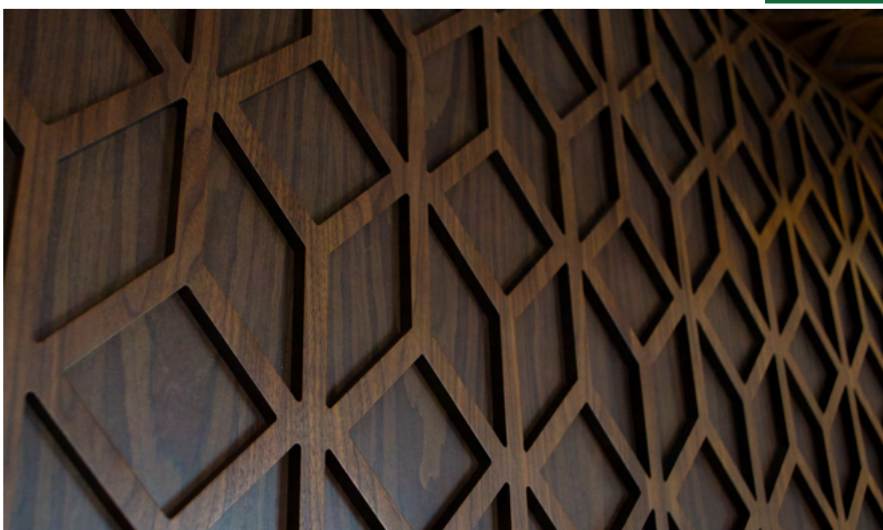
### Hired By

COLDEPA

### Description:

Rooms and Common areas







06

## JW Marriot

SANTO DOMINGO

**Project**  
JW Marriot

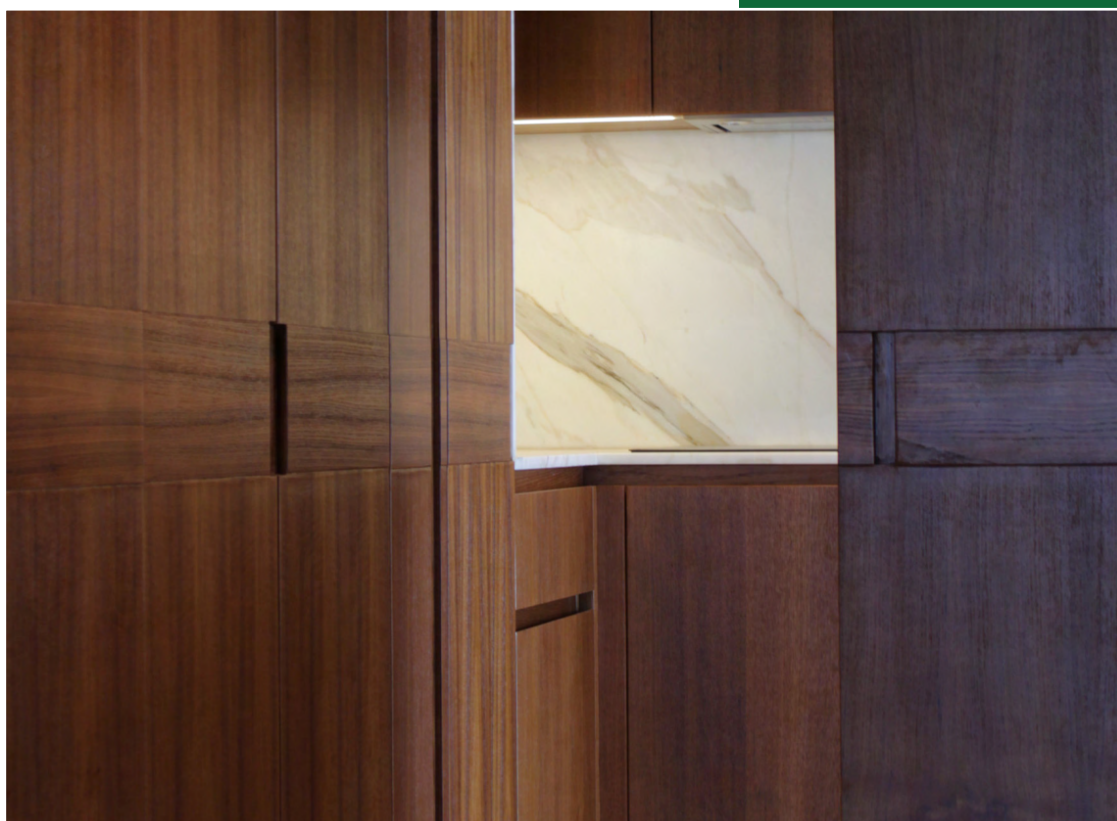
**Location**  
Santo Domingo,  
Dominican Republic

**Year**  
2015

**Hired By**  
COLDEPA

**Description:**  
Rooms





# 07

## Eden Rock

S T . B A R T H S



### Project

Eden Rock  
St. Barths

### Location

St. Barths  
Caribbean

### Year

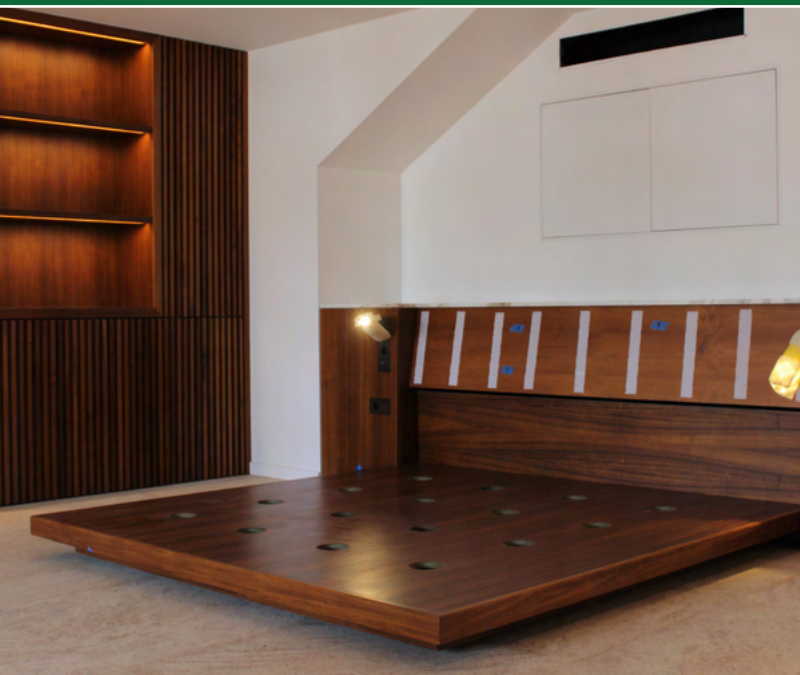
2018-2019

### Owner

Eden Rock

### Hired By

Atelier Du Mahogany



### Designer

Various

[www.oetkercollection.com/hotels/eden-rock-st-barths](http://www.oetkercollection.com/hotels/eden-rock-st-barths)

### Description:

Rooms



# 08



## Club Med

M I C H E S

**Project**  
Club Med  
Miches

**Location**  
Miches  
Dominican Republic

**Year**  
2019

**Owner**  
Development Sicuani  
Club Med

**Hired By**  
MPF International

---

**Designer**

Fusion Interior Group  
Hilary Lancaster

[www.fusioninteriorsgroup.com](http://www.fusioninteriorsgroup.com)

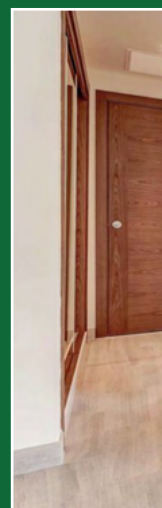
**Description:**

Common area : Restaurants & Bars

DESIGNER  
ARTICLE



Bespoke luxury joinery details & furniture design. The banquettes were custom designed as curved waves to tie in with the underwater theme by Fusion Interiors, and produced in our factory in Santiago, Dominican Republic.



Photos from  
<https://www.royaltonresorts.com/royalton-antigua>

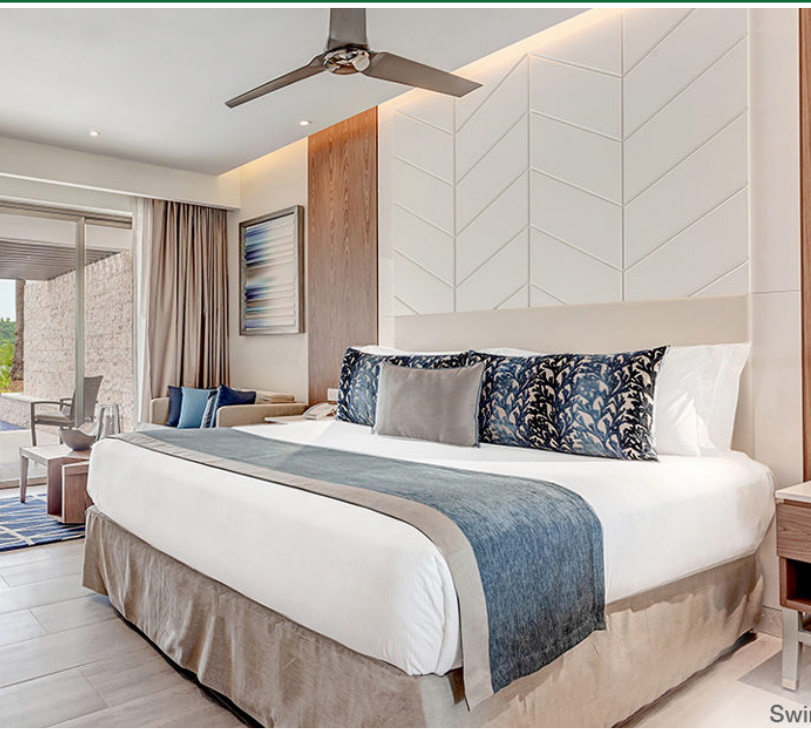




# 09

## Royalton

BLUE DIAMOND



**Project**  
Royalton Antigua -  
Blue Diamond Resorts Collections

**Location**  
Antigua,  
Caribbean

**Year**  
2019

**Owner**  
Blue Diamond  
Resorts Collections

**Hired By**  
COLDEPA

[www.royaltonresorts.com](http://www.royaltonresorts.com)

---

**Description:**  
Custom room furniture  
Overwater Bungalows





# 10

## AC Santiago Hotel

SANTIAGO

### Project

AC Santiago Hotel  
By marriot

### Location

Santiago de los Caballeros,  
Dominican Republic

### Year

2024 -2025

### Clients

Proffetional & Grupo Deproc

### Designer

Room 1804

### Description:

Main Lobby  
Buffet Restaurant  
Doors and Access Points  
Rooms and Hallways  
Spectacular Rooftop



PROJECT  
VIDEO

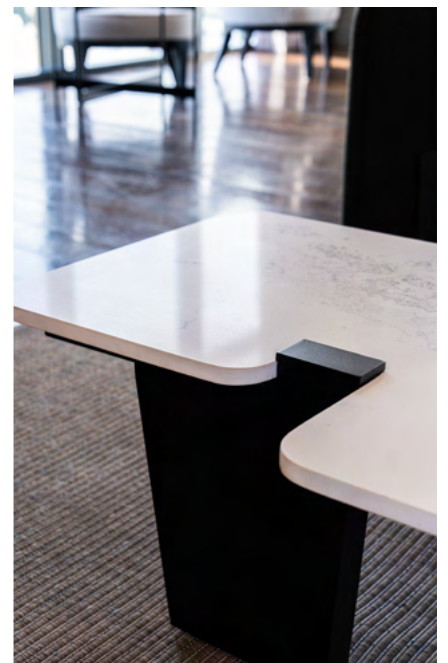




# AC Santiago Hotel

SANTIAGO





# AC Santiago Hotel

SANTIAGO





# AC Santiago Hotel

SANTIAGO







# 1

## Latitude 18

SANTO DOMINGO

**Project**

Latitude 18

**Location**

Santo Domingo  
Dominican Republic

**Year**

2024-2025

**Client**

RCD Hotels

**Hired By**

Latitude 18

**Description:**

Millwork for Marriott common areas  
and Latitude 18 Restaurants

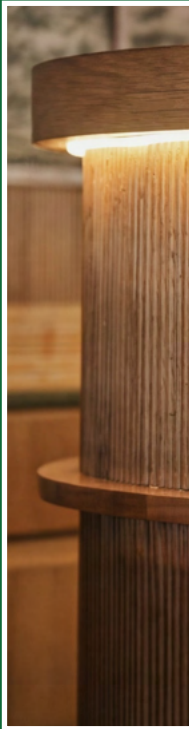
**Materials used:**

Wood, wood veneer, aluminum, metal,  
HPL, Dibond, fabrics, rattan, quartz.

PROJECT  
VIDEO



WALK through



# Latitude 18

SANTO DOMINGO

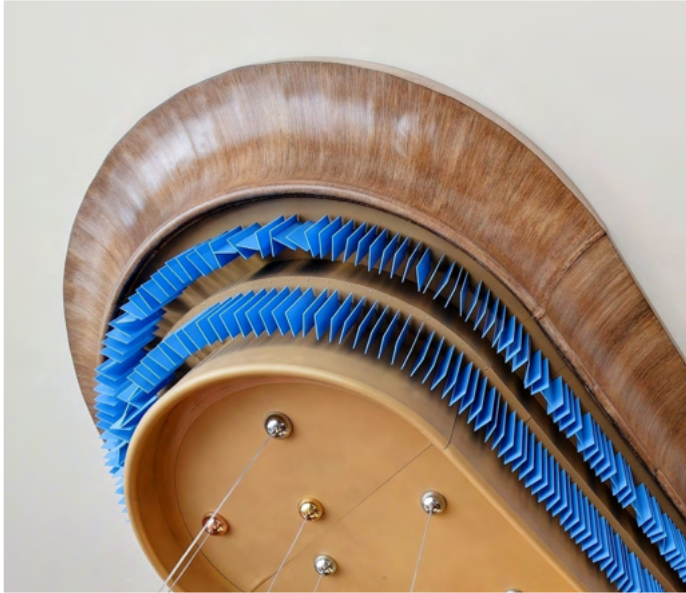




# Latitude 18

SANTO DOMINGO

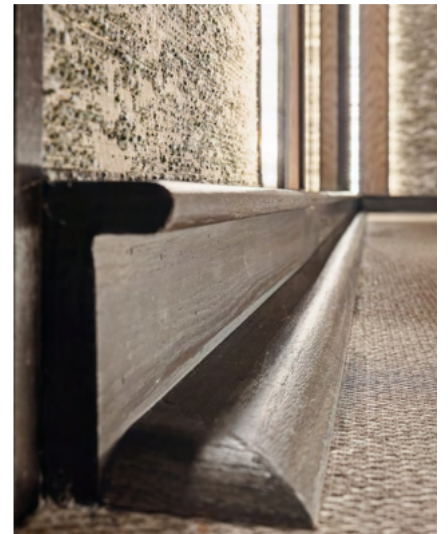




# Latitude 18

SANTO DOMINGO

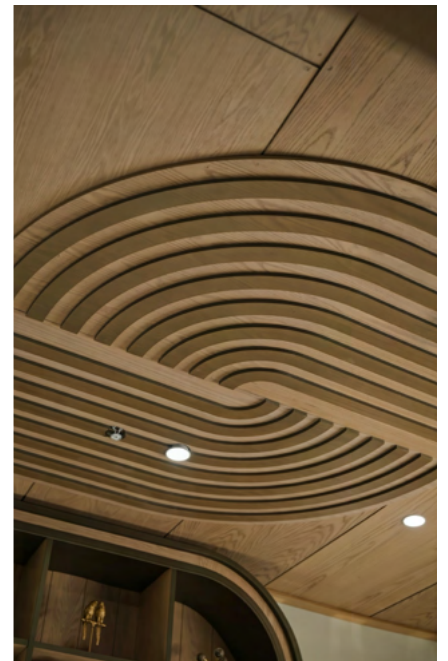




# Latitude 18

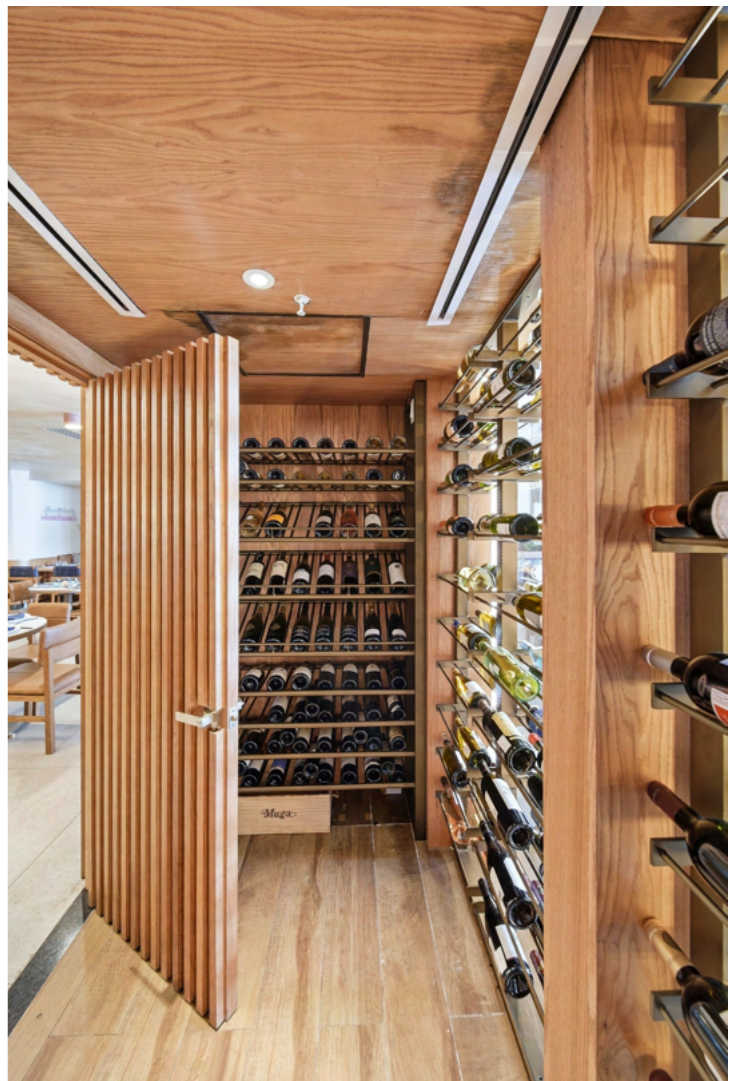
SANTO DOMINGO

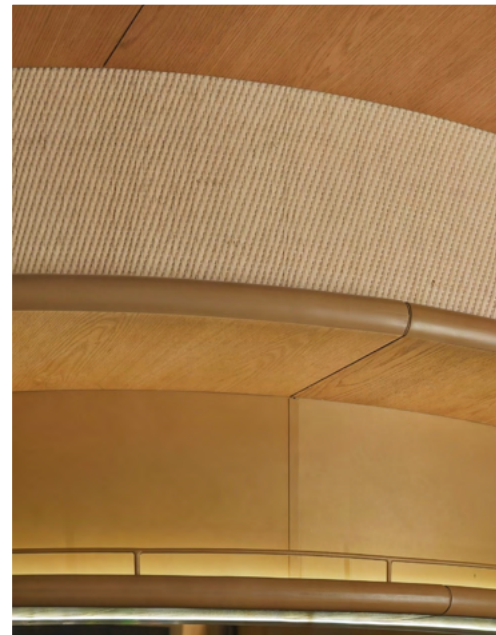




# Latitude 18

SANTO DOMINGO





# Latitude 18

SANTO DOMINGO





# Latitude 18

SANTO DOMINGO



Marriot Gym: Towel shelves, wall coverings, wood ceiling



# Latitude 18

SANTO DOMINGO





# 12

## 157 Pizza

C H E L S E A , N Y .

**Project**  
157 Pizza

**Location**  
Chelsea, New York,  
United States

**Year**  
2025

**Client**  
HECHO DESIGNS

**Designer**  
HECHO DESIGNS

**Description:**

Manufacturing of millwork and furniture  
Wooden Benches  
Wall Coverings, Front Desk and other millworks  
manufactured combining wood veneer and  
solid wood Counter bar manufactured with the  
combination of HPL and Stainless Steel.  
Service Island manufactured with a combination  
of HPL, Stainless steel and tempered glass



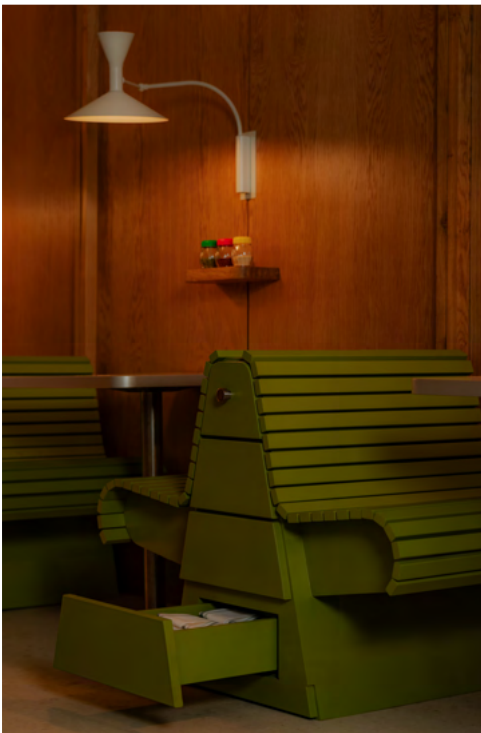


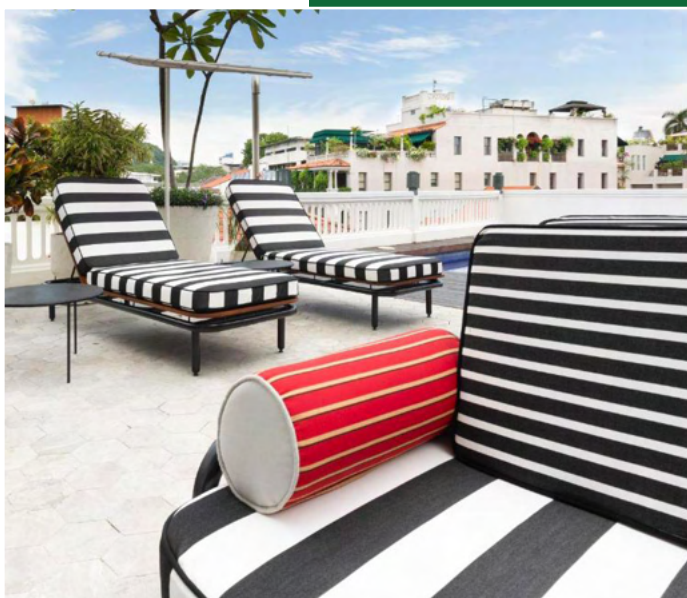
Wall Coverings, Front Desk and other millworks manufactured combining wood veneer and solid wood. Counter bar manufactured with the combination of HPL and Stainless Steel. Service Island manufactured with a combination of HPL, Stainless steel and tempered glass.



# 157 pizza

C H E L S E A , N Y .





Outdoor Furniture for terrace manufacturer in aluminium .Chaise Lounges and sofa





# 1 2 3 American Trade Hotel

P A N A M A

**Project**  
American Trade Hotel

**Location**  
Casco viejo, Panama

**Year**  
2024

**Client**  
HECHO DESIGNS

**Hired By**  
Hildegard Vazquez

**Designer**  
Hildegard Vazquez

---

**Description:**  
Outdoor Furniture

**Photo Credit:**  
CL anguna/Hache Uve



Outdoor Furniture for terrace manufacturer in aluminium .Chaise Lounges and teak chairs





# 14

## Hotel Lucine

T E X A S

**Project**  
Hotel Lucine

**Location**  
Galveston, Texas

**Year**  
2023

**Client**  
HECHO DESIGNS

**Hired By**  
HECHO DESIGNS



---

**Description:**  
Furniture  
Aluminium benches  
Aluminium and teak chairs

**Photo Credit:**  
Hotel Lucine



[www.madesol.com](http://www.madesol.com)